

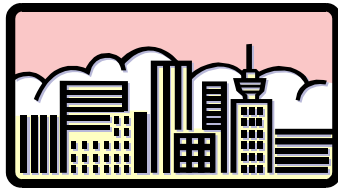
CCTV Line Drawing Assessment Tool



Bird is 1" h by 0.85" w



Frog is 1" h by 1.02" w



Cityscape is 1' H by 1.79" w



House is 1" h by 1.15" w



Rabbit is 1" h y 1.21" w



Deer is 1" h by 0.82" w



Car is 1" h by 2.01" w



Train is 1" h by 1.93" w



Landscape is 1" h by 1.47" w

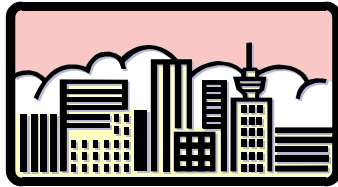


Beach scene is 1" h by 1.4" w

Rationale for Pictures Chosen



The bird and the frog are simple line drawings that will be easily recognizable under either a colour or black and white CCTV. There is just enough colour to provide some visual cues but not enough shading to present problems if using a black and white CCTV under which these would appear as grayscale images.



The cityscape on the right was chosen because it has a dark border around it. It is also a line drawing with some colour and bold buildings. By having the dark border, you can check to see if items that are confined or outlined make more sense to a CCTV use, provide them a guiding system for what area they are supposed to be looking at.

The image of the house on the left is a simple line drawing with enough colour contrast to assist if you are using a colour CCTV but not enough to throw identification off if you are using a black and white CCTV. These two line drawings are a bit more difficult and have a bit more detail than the first two line drawings.



Moving a bit backward, these next two line drawings are plain black and white drawings but do bring in more abstract concepts. The rabbit is perhaps the easiest to identify, but the deer against the tree requires more concentration and reference points of both knowledge of deer and trees and in piecing together the parts of this line drawing.



The car and train are large, bold and very much black and white images. This will provide another set of reference points for assessment in that you will be able to determine how dark and how much of an image are required by the client to identify images under a CCTV. Both of these line drawings are familiar objects to bring predictability to the assessment process.



The last two images are very complex and very colourful. The first one is a cottage scene with trees and a lake, sky and a cottage.

There is a lot of colour but also a lot of abstract line images. The beach scene is not quite so complex although it does have the large umbrella, water, birds in the sky and sand. This will give you an idea of how much information can be obtained from the client using a CCTV for accessing images and also allows some access to their ability toward abstract recognition.

This document was prepared to provide line drawings based on the CCTV Assessment from the Texas School for the Blind web resource page at <http://www.tsbvi.edu/technology/cctv-assess.htm>

Clip Art from Microsoft Office 2000 suite was used and resized to fit the Texas School for the Blind criteria. This document is also done as accessible PDF using Adobe Acrobat 5. You can print and comment on the document, but you can not change, copy or extract information from it.

End of Document